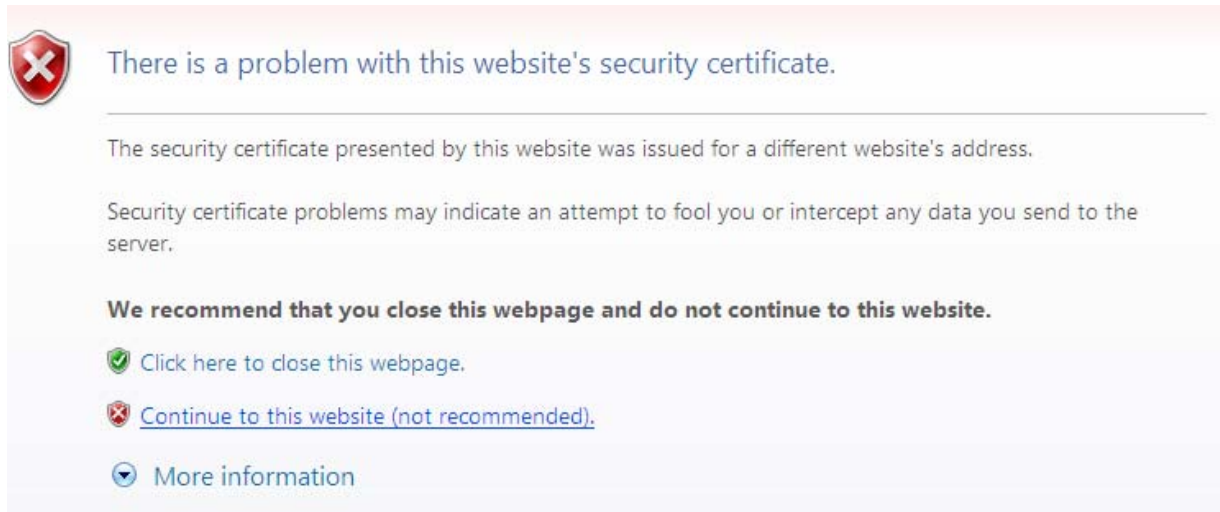


INSTALLATION INSTRUCTIONS:

1. Browse to <https://cshris.dximaging.net/risclient/index.htm>
2. You may be prompted with an SSL Certificate Error like the following:

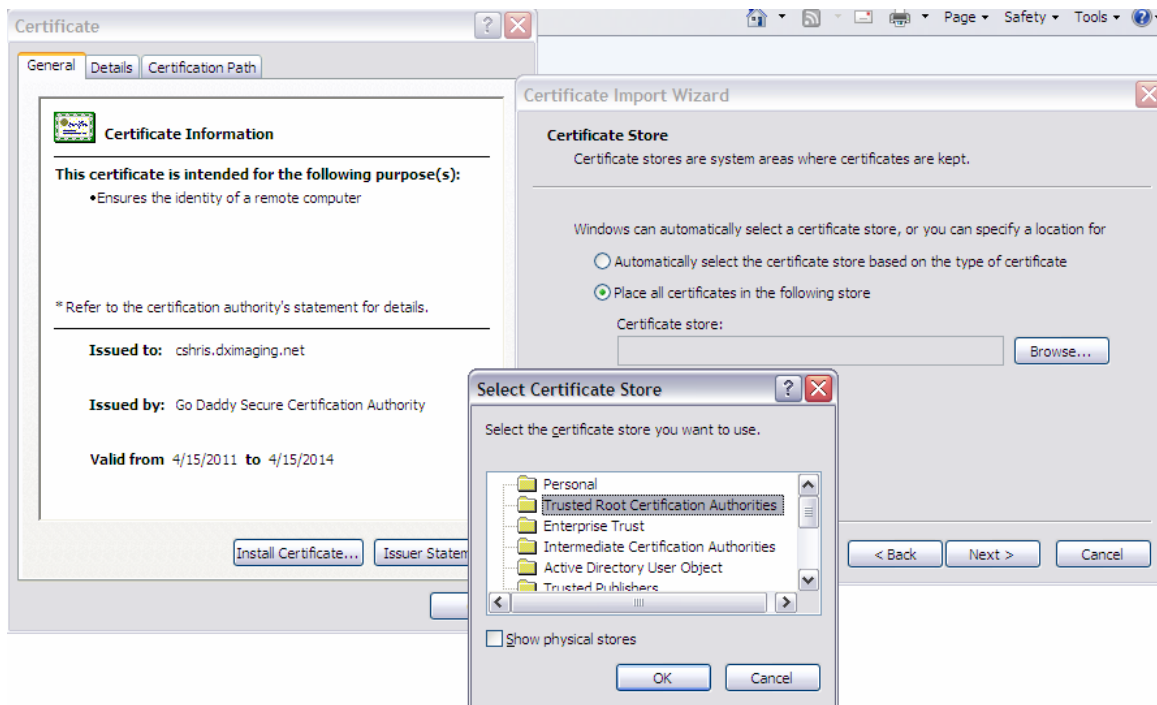


If so, click '[Continue to this website \(not recommended\).](#)'

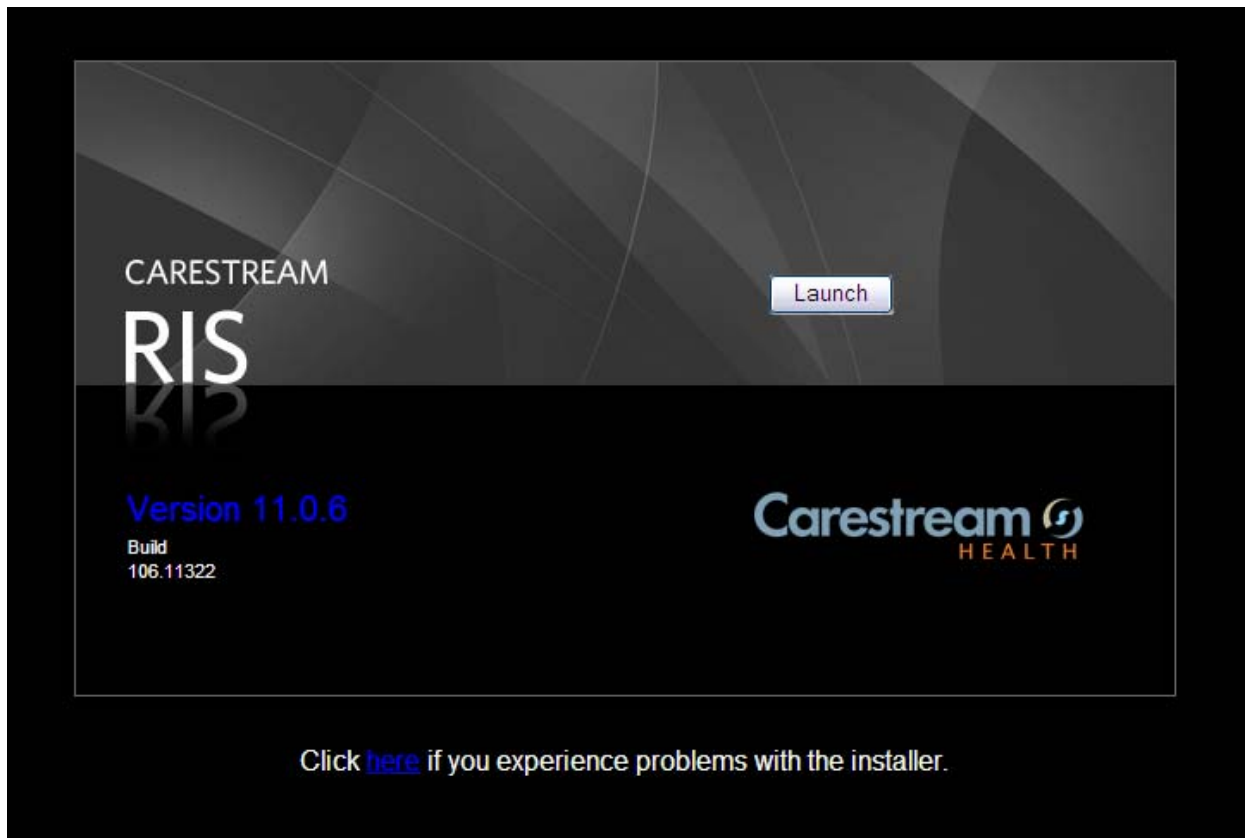
Windows 7

Check Tools>Internet Options>Advanced

3. You will notice on the top right side of the web address you will have an SSL Error still displaying. Click the **Certificate Error** and in the **Untrusted Certificate** popup, click the **View Certificates** link. On the **Certificate** popup, select the **General** tab and click **Install Certificate**. Place the certificate in the 'Trusted Root Certification Authorities' (See screenshots below)



When prompted with the Security Warning, choose 'Yes'. Close IE and restart it. You should be able to click Browse to the RIS website again (<https://cshris.dximaging.net/risclient/index.htm>) without any errors.



Creating a Shortcut on your desktop for subsequent RIS logins:

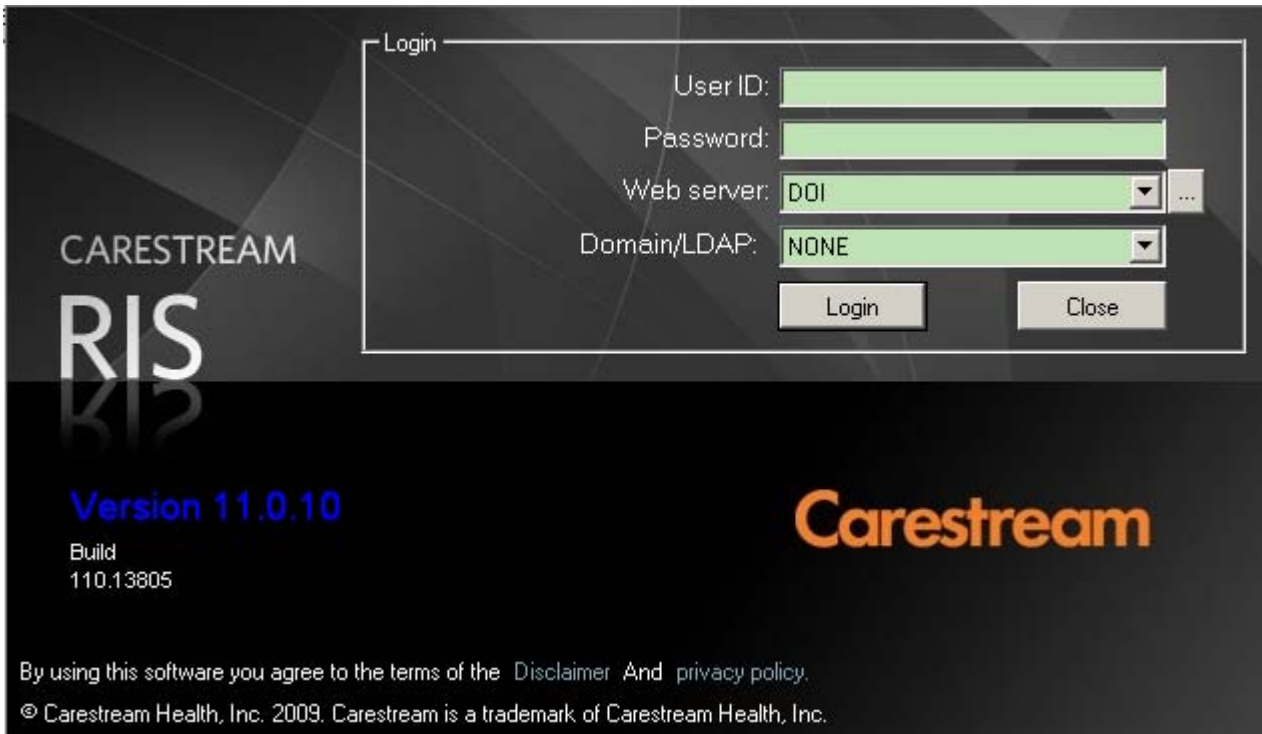
1. Browse to <https://cshris.dximaging.net/risclient/index.htm>
2. From Internet Explorer, open the File dropdown and select Send>Shortcut to Desktop

This will place a Carestream RIS Icon on your desktop and allow you to launch the client webpage from your desktop.

*****IMPORTANT*****

Please ensure you are ALWAYS using this webpage for login, rather than creating a shortcut directly to your CarestreamRIS.exe. Automatic upgrades and auto-population of your web server will be disabled if you do not run the application from the appropriate 'Launch' page.

Enter your current login & password into the Carestream RIS authentication window.



For Windows 7 64-bit operating system: turn off Data Execution Prevention (DEP)

1. Click Start ->All Programs->Accessories.
2. Right click Command Prompt and select "Run as administrator".
3. Click Continue when the User Account Control window appears.
4. Copy the following **command**, right click in the opened command window, and then choose Paste. Press ENTER and you will receive the message "The operation completed successfully".

bcdedit.exe /set {current} nx AlwaysOff

5. Reboot the computer.

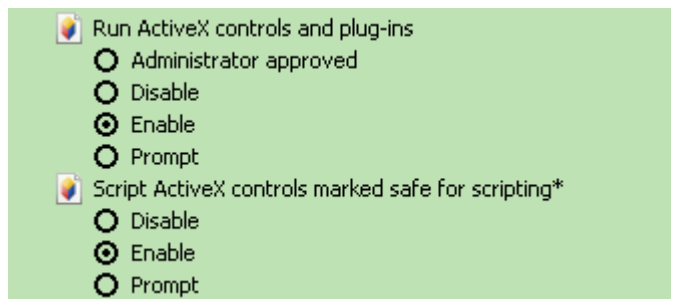
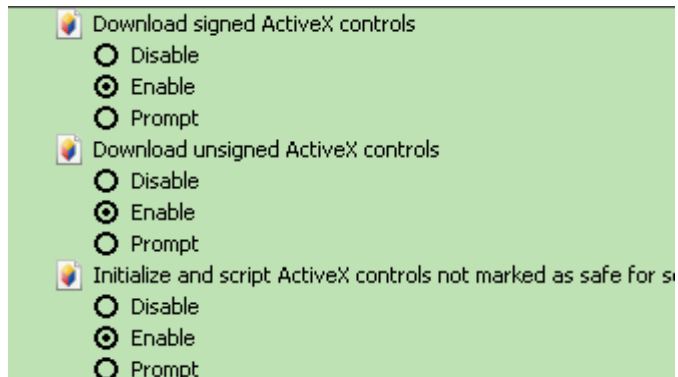
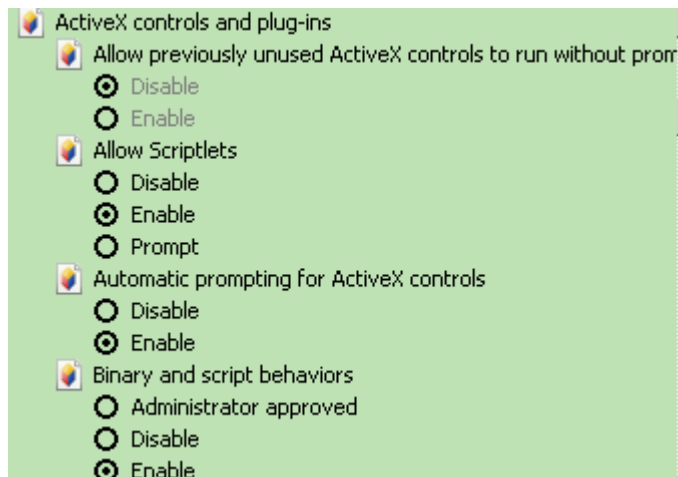
APPENDIX

NOTE: I've included these settings because we had to change them in the past. Andrew Ellis says these changes should no longer be necessary with the new builds. I'm including this just in case.

If you are having problems accessing DOI, check

Internet Explorer>Tools>Options>Security>Trusted Sites>Custom Level for settings which may block ActiveX controls.

EXAMPLE of working set up on XP:




RIS Client Install

REQUIREMENTS:

1. Adobe Acrobat Reader version 9 (no higher than 9.3.1)

Free Download Site for Adobe Acrobat Reader:

http://get.adobe.com/reader/download/?installer=Reader_9.4_English_for_Windows&p=Google_Toolbar_6.5&a=ARH&a=Air_Installer&d=McAfee_Security_Scan_Plus&os=XP&browser=ie&type=activex

2. For Operating Systems older than Microsoft Windows XP Service Pack 3, you may need to load Microsoft Windows installer 3.1
 - check operating system version by right-clicking **My Computer** or **Start**  and selecting **Explore** from the popup menu
 - use the **Help>About** toolbar menu option to get the operating system version

Free Download Site for Microsoft Windows installer 3.1:

<http://www.microsoft.com/downloads/en/details.aspx?FamilyID=889482fc-5f56-4a38-b838-de776fd4138c>

File Name:	Size:	Download files below
Redist.txt	2 KB	Download
windows installer 3.1 EULA.doc	58 KB	Download
WindowsInstaller-KB893803-v2-x86.exe	2.5 MB	Download

- download and install WindowsInstaller-Kb893803-v2-x86.exe.

3. Microsoft.net Framework 3.5 SP1

Free Download Site for Microsoft.net Framework 3.5 SP1:

<http://www.microsoft.com/downloads/en/details.aspx?FamilyID=333325FD-AE52-4E35-B531-508D977D32A6&displaylang=en>

File Name:	Size:	Download
dotNetFx35setup.exe	2.7 MB	Download

- download and install Microsoft.net Framework 3.5 SP1 (dotNetFx35sp1.exe) with defaults.